

WHAT IS EARLY START?

A statewide interagency system of coordinated early intervention services for infants and toddlers with or at risk for disabilities or developmental delay and their families. **Regional Centers are open and accepting referrals for Early Start during COVID-19.** If you suspect that an infant or toddler has a developmental delay or atypical development then:

Screen



A child may be eligible for early intervention services if they:

- Show a developmental delay in one or more areas of cognitive, communication, social or emotional, adaptive, or physical and motor development, including vision or hearing;
- Have an established risk condition of known etiology, with a high probability of resulting in delayed development; or
- Are considered at high risk of having a substantial developmental disability due to a combination of biomedical risk factors that are diagnosed by qualified personnel.

Refer



- Local Regional Centers <https://www.dds.ca.gov/rc>
- Local Educational Agency <http://www.cde.ca.gov/sp/se> (for children with solely low incidence visual, hearing, and orthopedic disabilities)
- Within 45 days, the regional center or local educational agency will:
 - Assign a Service Coordinator
 - Obtain parental consent
 - Schedule & complete evaluations
 - Develop an Individualized Family Service Plan (IFSP) to develop strengths and services
 - Provide services in home or community setting
- Go to <https://www.dds.ca.gov/services/early-start/what-is-early-start/> to learn more about the referral process.

Get Involved



- Collaborate with community resources in treatment planning by providing written communication;
- Participate via conference call;
- Attend IFSP meetings; or
- Provide input and receive feedback from the assessment team.
- You can be the link between families and the early intervention process! For information about family support, go to the Family Resource Centers website <http://www.frcnca.org>

See Results



- Studies found that children who participate in high-quality early intervention/early childhood development programs tend to have
 - Less need for special education and other specialized services;
 - Greater language abilities;
 - Improved nutrition and health; and
 - Experienced less child abuse and neglect.



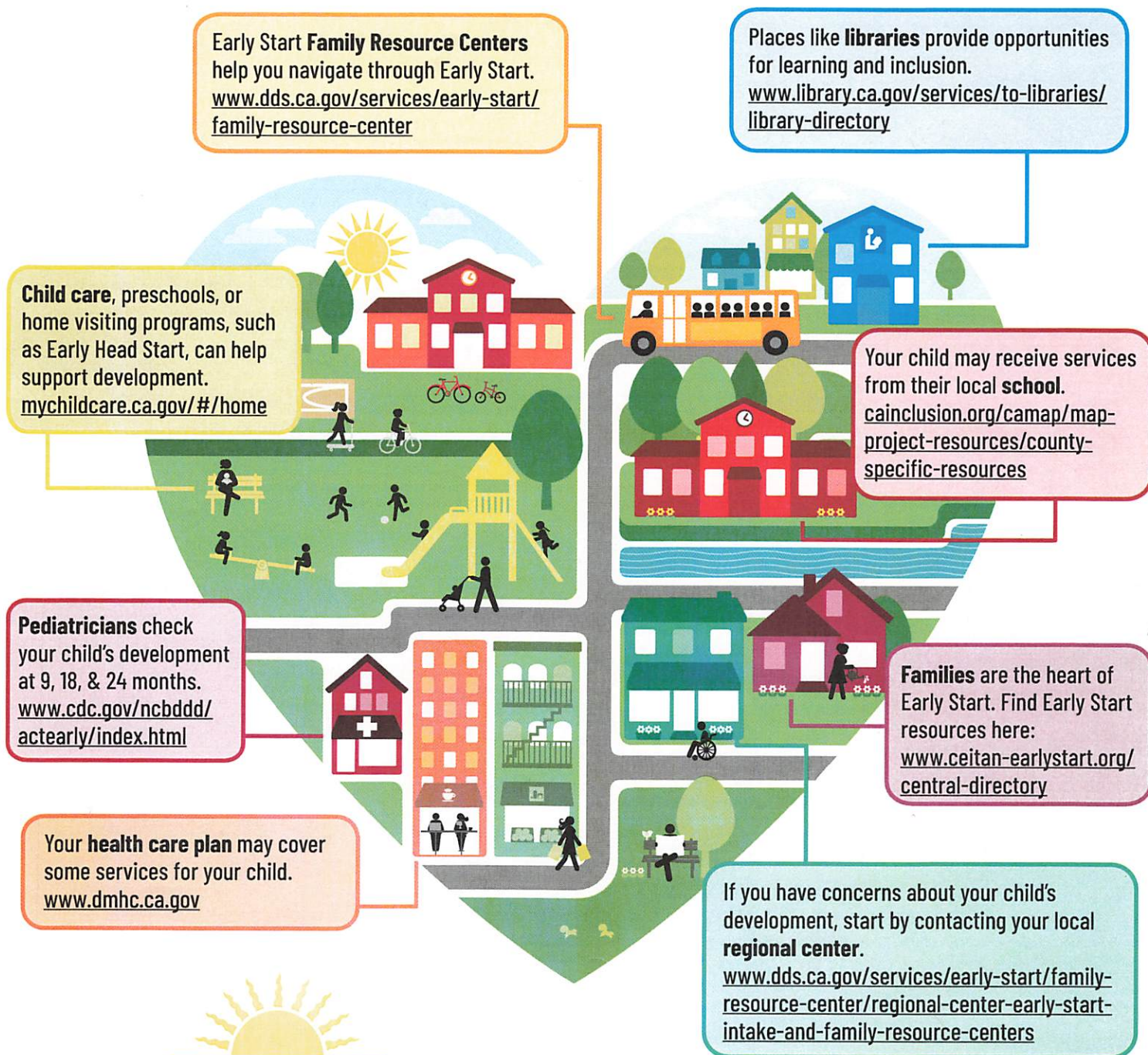
California Department of
Developmental Services



For more information and/or questions regarding Early Start referrals, please contact the Early Start BabyLine at 1-800-515-BABY or email EarlyStart@dds.ca.gov.

The Early Start Community

If you have a young child who needs specialized care or has a disability, or if you have a concern about your child's development, there is help and support in your community!



The California Department of Developmental Services and the Interagency Coordinating Council on Early Intervention have information for parents and professionals about how to get help and support. For additional questions, please call the Early Start BabyLine at 800-515-BABY (800-515-2229).

Local contact information: